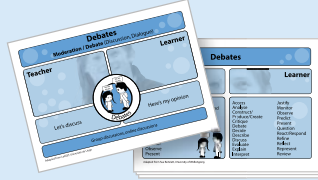


CETL(NI): Institutional E-Learning Services

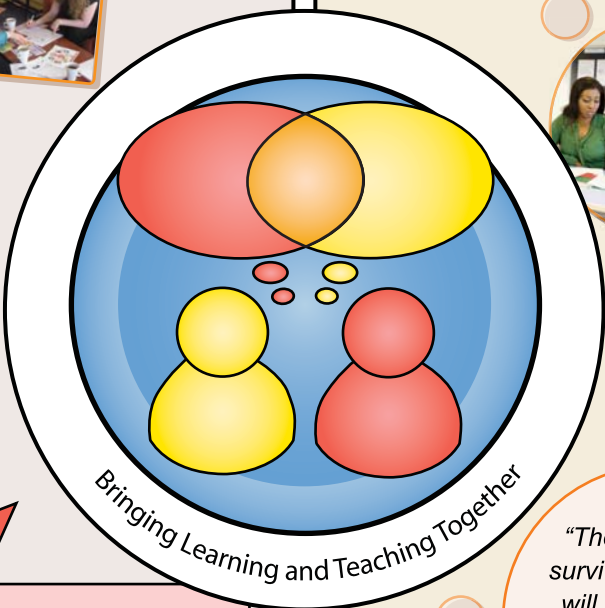
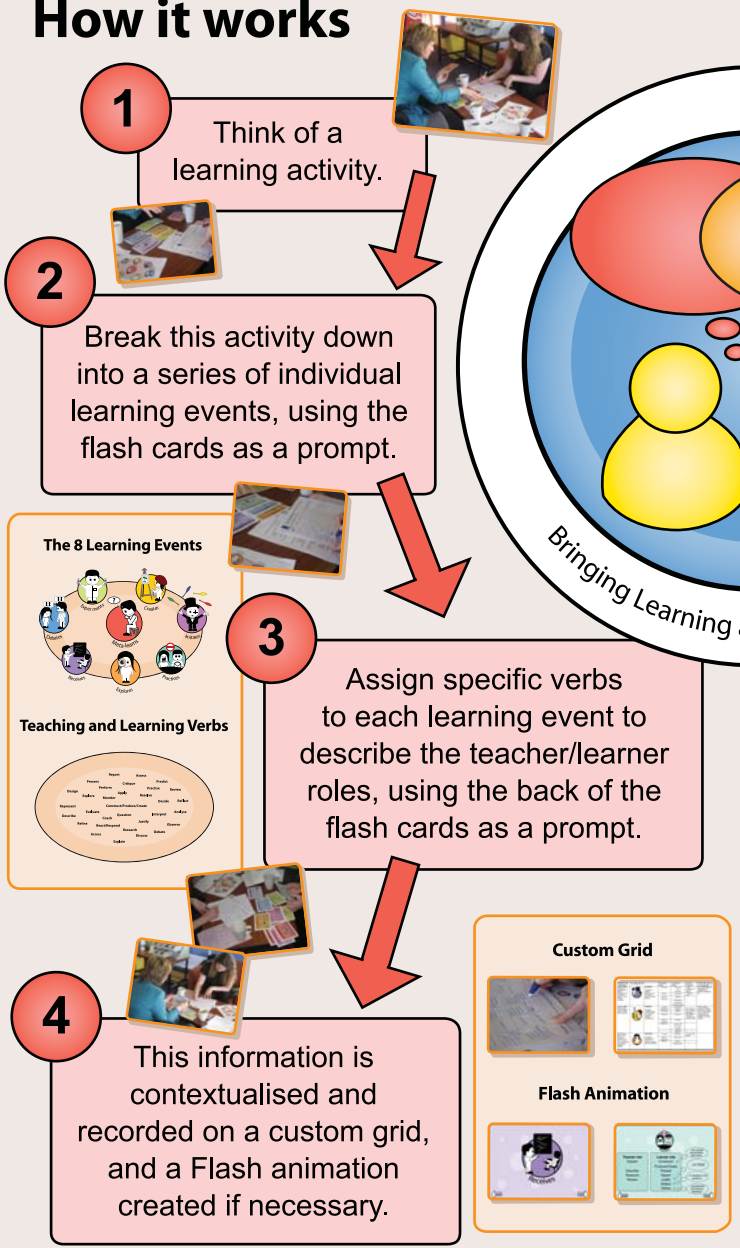
Hybrid Learning Model

The Hybrid Learning Model is a user-friendly way of capturing, describing and reflecting on practice in teaching and learning.



Using visual flash cards that represent eight different learning events, users can create a detailed 'roadmap' of teaching and learning processes.

How it works



Course revalidation

Possible Uses



Sharing practice

"The students now demonstrate a greater understanding of what is expected of them."

Gillian Armstrong and Una McMahon-Beattie

Reflection, evaluation and review of practice

"The cards are a survival tool kit that will allow them to become more effective practitioners."

Elaine Courtney



Improving student skills

Staff/student induction

Enhanced briefing for students



Lesson planning

"Equally suited to describing face-to-face and online learning events, the model offers a common design language for both."

Helen Beetham

Peer observation

Contact Details

CETL(NI): Institutional E-Learning Services
University of Ulster at Jordanstown
Shore Road, Newtownabbey
Northern Ireland BT37 0QB

Director: Dr Alan Masson
aj.masson@ulster.ac.uk

<http://cetl.ulster.ac.uk/elearning>
Enquiries: elearning@cetl.ulster.ac.uk